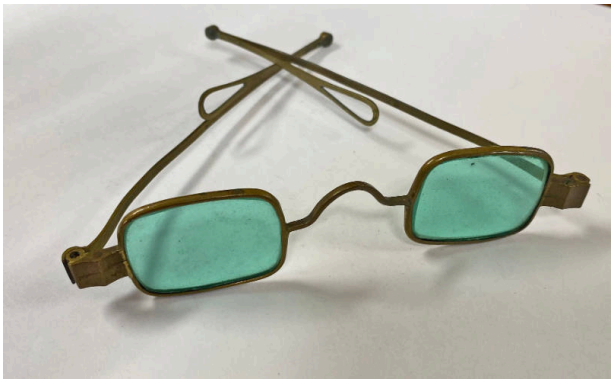


Basic Detail Report



Spectacles

Medium

Brass, green glass

Description

A pair of eyeglasses (spectacles) comprised of a brass frame, with two rectangular panels of green-tinted glass with slightly rounded corners on either side of a widely-

spaced nosepiece. Wide, flat hinges connect to thin flexible brass ear wires. The ear wires are hinged towards the tips, ending in fine wire loops.

Dimensions

4.5 in. (11.4 cm)